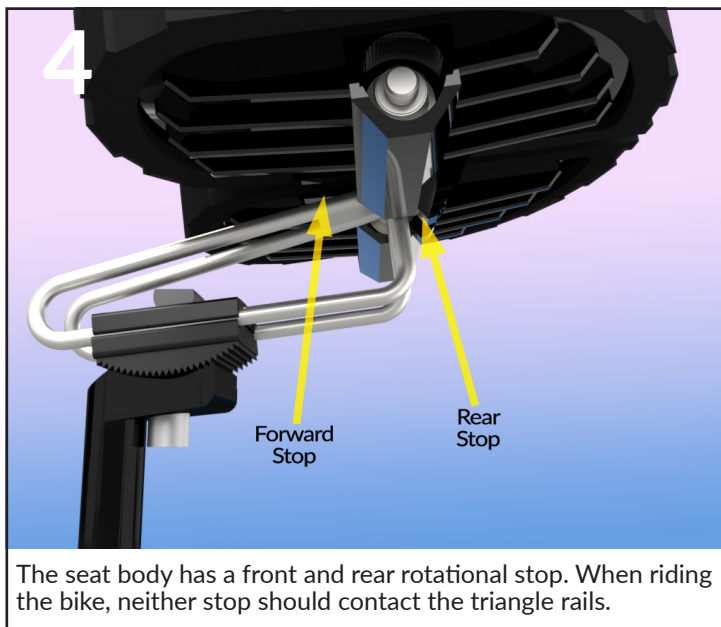
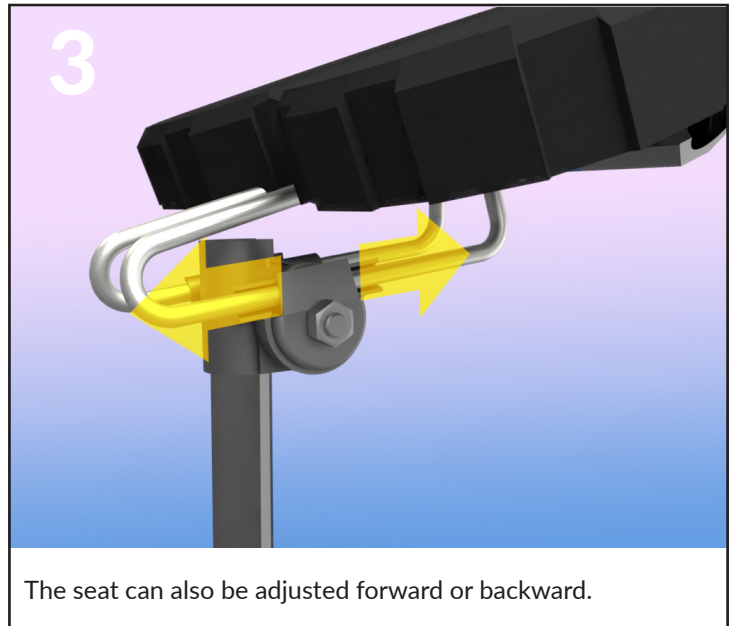
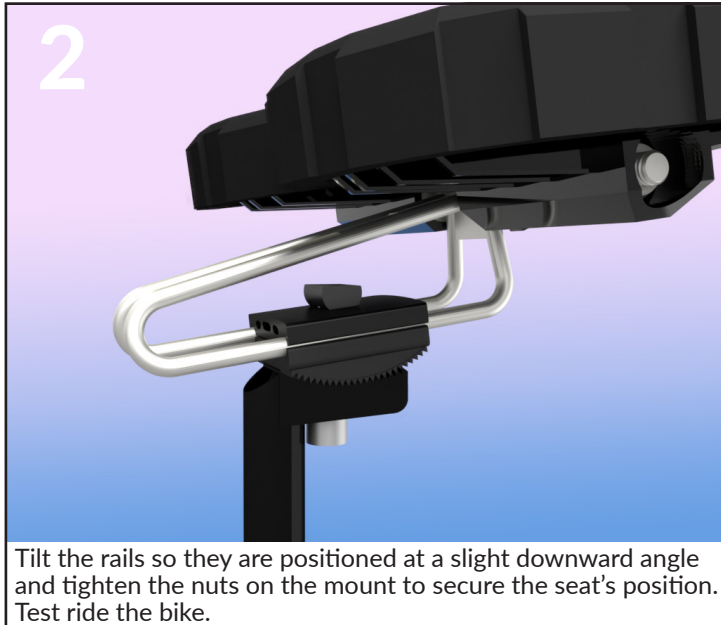
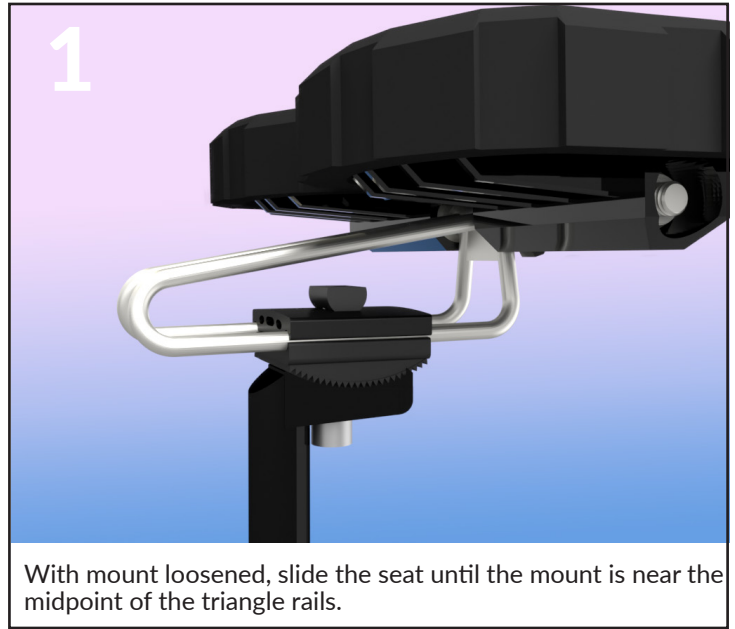


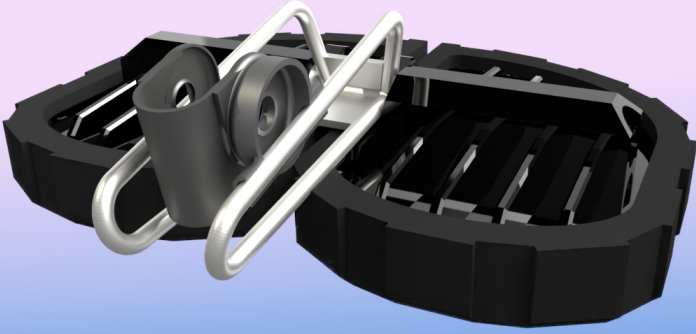
Adjustment Guide

Proper seat adjustment is critical to achieve a comfortable ride. Follow this guide for installation & adjustment and you will agree...

The SweetCheeks "Cruiser" is the only seat you will ever need!



5



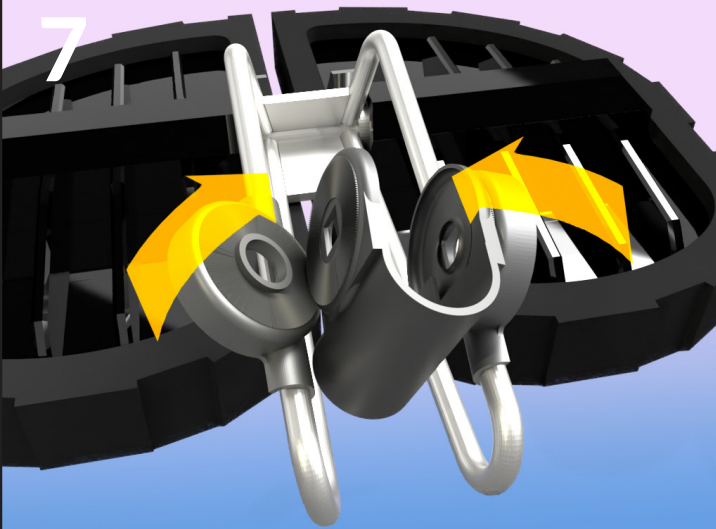
Position the assembly between the triangle bars with the inner clamp groove on the triangle bar. **Be sure to post mount retaining barb is closest to the seat.**

6



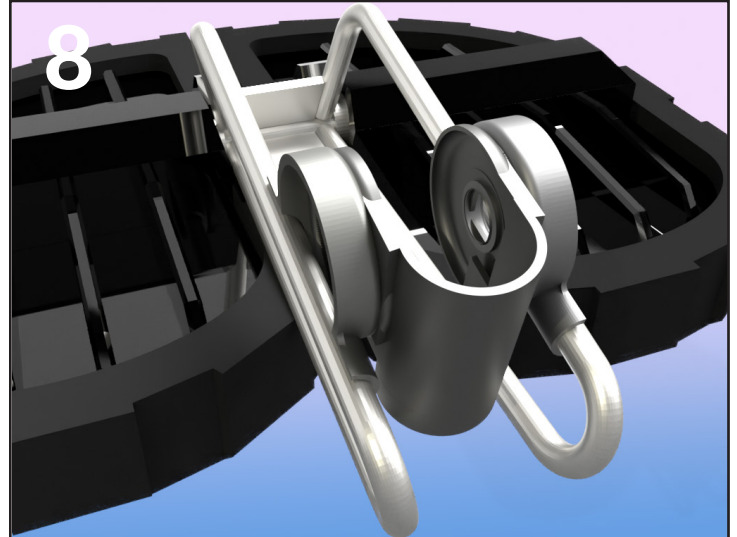
Put the groove on the inner clamp on the front edge of the triangle shaped bar.

7



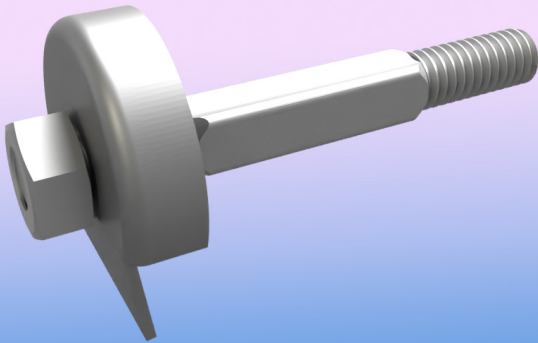
Squeeze the post clamp and the second inner clamp together until they snap into each other. **Be careful not to pinch your fingers!**

8



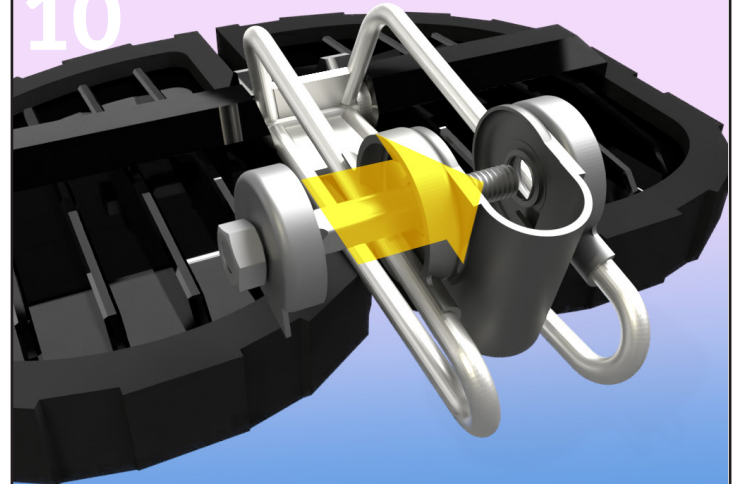
The clamp ratchets must engage. If not, insert the screwdriver through the bolt holes to pry the clamp ratchets into alignment.

9



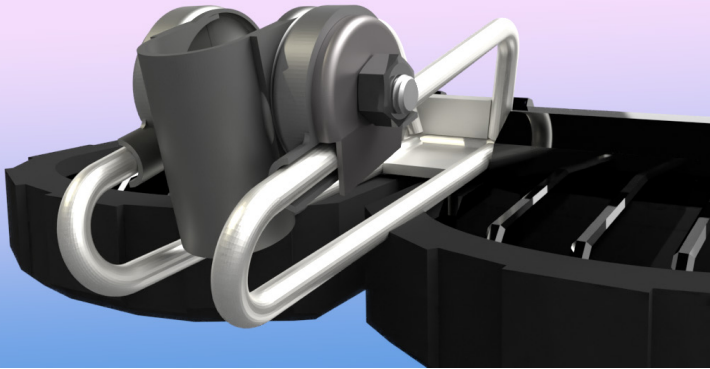
Slide an outer clamp onto one side of the bolt as shown and attach a nut.

10



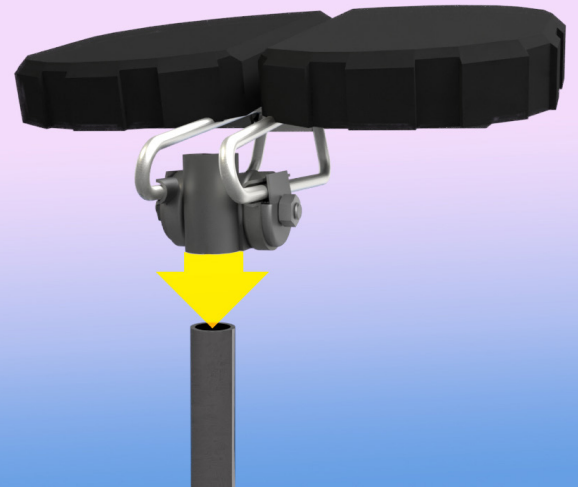
Rotate the outer clamp to align with the triangle bar and push the bolt all the way through the mount.

11



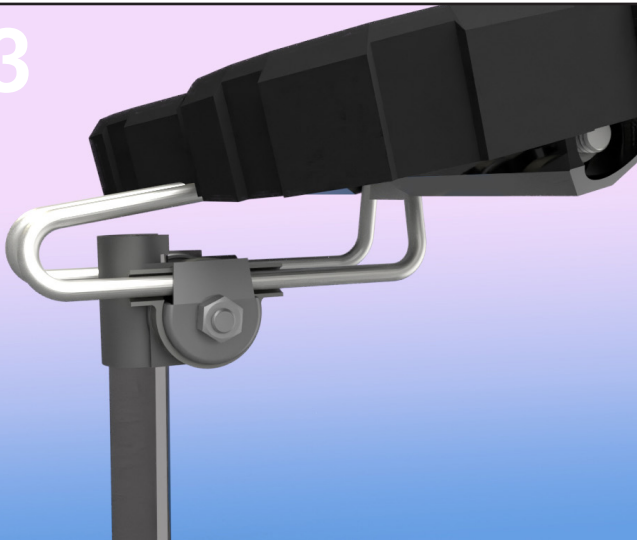
Place the second outer clamp onto the other end of the bolt and thread the second nut onto the bolt.

12



Slide the mount onto the top of the seat post.

13



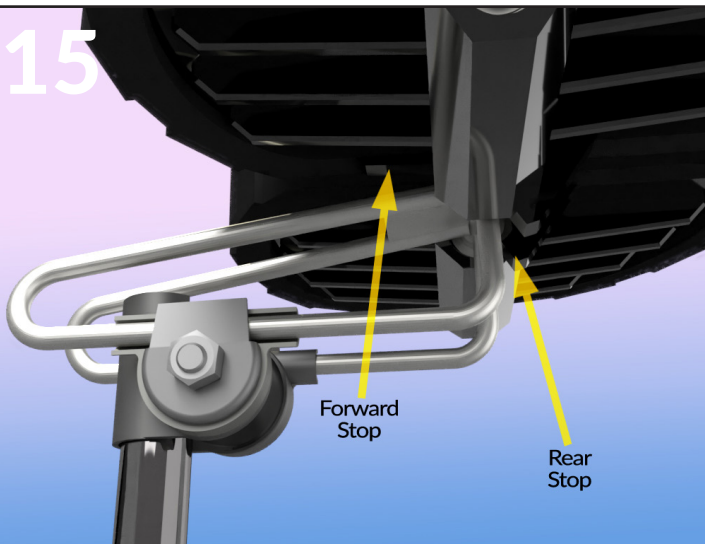
With mount nuts loosened slide the seat until the mount is near the midpoint of the triangle rails.

14



Tilt the rails so they are positioned at a slight downward angle and tighten the nuts on the mount to secure the seat's position. Test ride the bike.

15



The seat body has a front and rear rotational stop. When riding the bike, neither stop should contact the triangle rails.

Enjoy your long rides again!